

The New York Science Fiction Society—the Lunarians, Inc.
presents its 42nd annual Science Fiction and Fantasy Extravaganza

Lunacon '99



Guest of Honor

Vernor Vinge

Artist Guest of Honor

Bob Eggleton

Fan Guest of Honor

Anthony R. Lewis

**March 5-7, 1999
Rye Town Hilton
Rye Brook, New York**

Lunacon '99

March 5-7, 1999
Hotel reservation form

Mail to: Rye Town Hilton
699 Westchester Avenue
Rye Brook, NY 10573
1-914/939-6300

Please print legibly

Name: _____

Address: _____

City: _____ State: _____ Zip Code: _____

Phone #: (____) _____ HHonors #: _____

Sharing with: _____

Arrival date/time: _____ Departure: _____

Room Type:

- | | | | |
|---|-------|---|-------|
| <input type="checkbox"/> Single | \$102 | <input type="checkbox"/> Triple (two Double beds) | \$120 |
| <input type="checkbox"/> Double | \$108 | <input type="checkbox"/> Quad (two Double beds) | \$120 |
| <input type="checkbox"/> Twin (two Double beds) | \$108 | | |

Floor Type:

- | | |
|--------------------------------------|--|
| <input type="checkbox"/> Smoking | <input type="checkbox"/> Hosting-a-Party Room |
| <input type="checkbox"/> Non-smoking | <input type="checkbox"/> Near-the-Party Rooms |
| | <input type="checkbox"/> Away-from-the-Party Rooms |

Other Special Requests: _____

(The hotel will attempt, but cannot guarantee, to honor special requests)

Reservations will be held until 6 pm of the arrival date unless guaranteed by a deposit check, or by one of the following credit cards:

- | | | |
|---|--------------------------------------|-----------------------------------|
| <input type="checkbox"/> American Express | <input type="checkbox"/> MasterCard | <input type="checkbox"/> Visa |
| <input type="checkbox"/> Carte Blanche | <input type="checkbox"/> Diners Club | <input type="checkbox"/> Discover |

Card Number: _____ Exp date: _____

Cardholder Signature: _____

Please make checks or money orders payable to The Rye Town Hilton.

Do not send cash through the mail.

Notes: Reservations MUST be received by February 12, 1999.

Room rates quoted above do not include local taxes.

Check-in time is 3 pm, check-out time is 1 pm.

To avoid duplication, please submit only one reservation form for rooms shared by two or more people!

Suites are available only upon written request to the Convention Committee. Any suites arranged directly with the hotel are subject to cancellation.

recd. 1/10/99

"Welcome back, my friends, to the show that never ends..."

As sure as the falling of the leaves from the trees (...oh, that happened in November); as reliable as the first snowflakes of the season (...oh, that happened in December!); as inevitable as the media hype for the Super Bowl® (they haven't played that yet, have they?), so can the passing of another year be marked by the arrival of this, our way of reminding you about, and inviting you to **Lunacon**, our annual get-together promoting the best of the worlds of Science Fiction and Fantasy.

We hope to make **Lunacon '99** even better than before, keeping all the tried-and-true favorites that attendees look forward to, while throwing a few new and exciting things into the mix.

Once again, you will be able to find us at the Rye Town Hilton, in Rye Brook, NY, in Westchester County, a short hop north of New York City. By now, we're sure most of you know how to navigate the trans-dimensional corridor connecting the 4th and 7th floors.

Of course, if you have any comments, questions, or suggestions, please do not hesitate to contact us at any of the addresses listed further down in this Progress Report. You may direct your correspondence to a particular department, to the Chairman, or to the Committee in general if you like. We'll be happy to help you!

We'd also like to take the opportunity, right here at the top, to ask for your assistance. **Lunacon** cannot run without the aid of fans, like yourself, helping out. The setup and teardown of major Convention areas, such as the Art Show, Dealers Room and Con Suite, and general move-in on Thursday night and move-out on Sunday night are particularly in need of bodies. See the section on Staff for the details on how to sign up. Thank you in advance for your assistance.

And, as in years past, we look forward to seeing you at **Lunacon '99!**

Table of Contents

Hotel Registration Form	2	Staff	7
Welcome to Lunacon '99	3	Convention Office	7
Guests of Honor	4	Member Services	8
Animé	5	Internet Room	8
Art Show & Print Shop	5	Newsletter	8
Dealers Room	5	Convention Sales	8
Book Exhibit and Raffle	5	Other Fan Groups	8
Child Care	5	Registration	8
Programming	6	Program Book Ads	9
Regency Dancing	6	Hotel Information	9
Masquerade	6	Directions to Lunacon '99	9
Lunacon Weapons Policy	6	Keeping in Touch	10
Gaming	7	Credits	10
Con Suite	7	Membership Registration Form	11
Parties	7		

Guests of Honor at Lunacon '99

Vernor Vinge is the author of the Hugo Award-winning and Nebula Award finalist *A Fire Upon the Deep* (to which his newest book, *A Deepness in the Sky*, is a prequel), *The Peace War* and its sequel *Marooned in Realtime*, and *The Witling*, as well as "Grimm's World" (expanded as *Tatja Grimm's World*), and numerous other short stories. His first story, "Apartness", was published while he was still a student. The Hugo- and Nebula Award-nominated novella "True Names" is one of the few science fiction works to get computers right; it even has an early depiction of what is now called cyberspace. That's not surprising—in real life, he's a Professor of Mathematics and Computer Sciences at San Diego State University.

While Professor Vinge's (the final "e" is not silent) fiction is "Hard SF" grounded in science, his work is at heart humanistic and concerned with the question of humanity's place in the universe.

We at **Lunacon** are delighted that he is forsaking the balmy climes of Southern California to join us. We promised him it wouldn't snow. Much. Unless he wanted it to.

Bob Eggleton is a multiple Hugo- and Chesley Award-winning artist who has been attending **Lunacon** for many years. In those early years, he even had short hair!

He first came to prominence because of his awe-inspiring astronomicals, complex planetscapes and scenes of ships and stations of mammoth scale. His body of work, however, covers a broad range of styles and subjects, including photo-realism, hard science, horror, and high fantasy.

Over the years, Bob has done story illustrations and book covers for many well-known authors. His ability to produce quality artwork quickly makes

him a popular choice among publishers and art directors. As he himself says, "publishers love artists that slam out the work and sell their books. This is the secret of my being as prolific as I am." Additionally, he has found the time to do collectable cards and art books.

For a long time Bob asked us what it would take to be invited to be our Artist Guest of Honor. We told him he had to win a few Hugos, never thinking that he would take us so seriously!

Being a huge *Godzilla* fan, Bob has made a prominent place in his world for the big lizard. It surrounds every aspect of his life, including the display space for his many awards. The best part is that Bob is a really cool guy and will make his own unique contribution to our convention. We are pleased to feature his art work in our Art Show and that we can finally welcome Bob Eggleton to **Lunacon '99** as Artist Guest of Honor.

Anthony R. (Tony) Lewis became one of the founders of NESFA (the New England Science Fiction Association) after graduating from MIT ("Is there a doctor in the house?" "Sure—got any cyclotrons you need fixed?"), but hasn't rested on his laurels.

He is currently NESFA Treasurer and czar of NESFA Press. He chaired the first Noreascon, (the 1971 Worldcon®); while doing so, he learned that it only takes one week to learn how to run a Worldcon. ("Unfortunately, by then the Worldcon is over.")

The first issue of *LOCUS* was collated in Tony's living room. Many scurrilous stories are told about his past—most of them by Tony, himself. Be sure to ask him what it feels like to be knocked down by an atomic blast. He has been in fandom long enough to know where a lot of interesting bodies are buried; he probably put some of them there. Perhaps he can be persuaded to exhume a few.

Animé

Or "Japanese Animation" (for the uninitiated).

Lunacon's 17th annual Animé Video Program will feature an unmatched mix of recent translations, old favorites and the latest titles to arrive in this country. Japanese videos will be dubbed or sub-titled in English, or be accompanied by narrators providing running commentary.

Art Show & Print Shop

Lunacon has one of the finest science fiction and fantasy art shows around. This year's show will feature the work of Hugo Award-winning Bob Eggleton, our Artist Guest of Honor, as well as other well-known, obscure and novice artists in the genre.

We will have original artwork by about one hundred artists and a large Print Shop where inexpensive reproductions may be bought. Here's your chance to pick up work by the "next" Bob Eggleton... cheap!

If you want to display your art in the show, please send us a letter at the Convention PO Box or e-mail address (include your mailing address) and we will send you the necessary forms.

Dealers Room

As usual, our two Dealers Rooms offer a diverse selection of goods from filk tapes to jewelry, from t-shirts to stuffed animals, and from nostalgic videotapes to the latest new books—both paperback and hardcover—and used book bargains.

If you wish to be included on future Dealers Room mailing lists, please write us at the Convention PO Box or e-mail address. Remember to give us your mailing address with your inquiry.

Book Exhibit & Raffle

Want a chance to win hundreds of dollars' worth of books? Our Book

Exhibit will feature a wide assortment of books by prominent SF and fantasy authors, magazine subscriptions, role-playing games, and computer software—all donated by their publishers, and all to be raffled off.

Proceeds from the raffle go to the Lunarians' Donald A. and Elsie B. Wollheim Memorial Scholarship Fund, which helps beginning SF and fantasy writers from the New York metropolitan area attend the Clarion or Clarion West science fiction and fantasy writer's workshops. When you buy a raffle ticket, not only may you win a bundle of books, but you'll help a fellow fan become your favorite pro writer of tomorrow!

We will also hold a special auction at the convention to benefit the Scholarship Fund. Popular items for the Auction include signed books and manuscripts, and artwork. Contributions are tax-deductible. If you want to donate an item for the auction, please send it to:

Donald A. and Elsie B. Wollheim
Memorial Scholarship Fund
c/o NYSFS—the Lunarians, Inc.
Suite 234, 847A Second Avenue
New York, NY 10017-2945

Mark all donations to the attention of Scholarship Fund Auction.

Child Care

Want to do something without the kids?

Lunacon has contracted with a professional baby-sitting service to provide child care. The rate is \$5 an hour, up to a maximum of \$60 per child.

Children in Child Care will be under adult supervision, and provided with juice and healthy snacks, but not meals. Parents are asked to supply toys, diapers, etc.

Child Care tickets will be sold in the Convention Office. Depending on demand, tickets may also be available in the Child Care room itself.

Please pre-register your child for Child Care. Letting us know in advance allows us to arrange for adequate service.

Child Care Hours:

Friday 4 pm to 11 pm
Saturday 10 am to midnight
Sunday 10 am to 4 pm

Reminder: All children must be registered with the convention, and must at all times be under the supervision of an adult or in the **Lunacon** Child Care area.

Programming

Lunacon has traditionally had strong programming, with efforts in a variety of different areas. This year, we are planning to present an integrated program emphasizing discussion of SF&F literature as well as SF&F TV and movies, fanzines, fan history, filking, costuming, gaming, and science fact.

We'll have speeches, panels, debates, slide shows, presentations, readings, workshops, and other special items that we hope will make **Lunacon** a unique experience for fan and pro alike.

Regency Dancing

Just close your eyes and imagine you are back in the 1800s, during the English Regency period. You don't even have to know how to dance; our Regency Dance director will show you the basics.

The Regency Dance is scheduled for Friday evening, late enough to allow you time to get settled in and put on your dancing shoes. Ruffled shirts are optional.

Masquerade

Greetings from the new **Lunacon** Masquerade Director, David H. Silber.

The **Lunacon '99** Masquerade will be held on Saturday evening. Judging will be based on the experience skill division system. Divisions are: Young Fan, Novice, Journeyman, Craftsman and Master.

Masquerade registration will start sometime on Friday and end at 3 pm on Saturday. All contestants must attend

the Masquerade Orientation Session at 4 pm, where they will be assigned sequence numbers and have an opportunity to talk with the technical folks and ask questions.

We encourage the wearing of Hall Costumes during **Lunacon**; however, nudity is not a costume! Please cover revealing costumes while in the public areas of the hotel. Anyone intending to carry a weapon as part of their costume must clear it in advance with the Masquerade Director. Please refer to the Convention's Weapons Policy below.

For further details on the **Lunacon** Masquerade, or to volunteer to help, please visit the Masquerade website at <http://www.lunacon.org/masquerade.html> or contact me via **Lunacon's** various addresses. Send all Masquerade-related correspondence to my attention.

Incidentally, some of you may be wondering what happened to Susan deGuardiola, who has run the **Lunacon** Masquerade for the past many years. Don't worry—she is still around and is scheduled to be our MC at the Masquerade.

Lunacon Weapons Policy

NO WEAPONS OF ANY KIND ARE PERMITTED. People with weapons will not be registered. Anyone carrying a weapon during **Lunacon** will have his/her membership revoked without compensation. The use of a weapon as part of a costume at the Masquerade must be approved by the Masquerade Director prior to the event. To and from the Masquerade, weapons must be carried in an opaque container (for example: a paper bag). The Convention Committee considers a weapon to be anything classified as a weapon under New York State law, any object designed to cause bodily harm or any replica of such object, and any other object the Committee determines to be, or appear to be dangerous. This includes toy weapons of all types. The Committee reserves the right to amend this definition of a weapon, and to impound

weapons for the duration of the convention. Actions or behavior which interfere with the enjoyment of the convention by other attendees will also result in revocation of membership without compensation. Please remember—if in doubt, ask us.

Gaming

Our gaming directors always surprise us with original and offbeat items. For this year, they are planning three different AD&D® adventures, a Star Wars® RPG (as if we needed reminding about the upcoming new movie!), and an "Introduction to RPG" demonstration.

Also, we will be featuring four different styles of Magic: the Gathering® tournaments: Standard (Type II), Restricted (Type 1.5), Booster Draft, and Rath Cycle pre-constructed. You will need to bring your own decks for all but the Booster Draft tourneys.

Con Suite

Whether you're tired of buying things in the Dealers Room or watching and listening to Programming or just want to put up your feet and chat with friends, the Con Suite is the place to relax during the hustle and bustle. Or come in the evening for one of the best convention parties you've been to!

Sip, snack, or schmooze, but don't forget to join us Sunday morning for bagels and cream cheese.

If you have special dietary requirements, such as lactose or sucrose intolerance, please contact the Committee in advance so that we may provide for you. Drop a note, care of the Con Suite director, to the Convention PO Box or e-mail address.

Parties

After the scheduled events have shut down for the night, or sometimes even before, members get the chance to kick back their heels and declare: "It's party time!" Many people at **Lunacon** will host parties to which all convention

attendees are invited. Check the Convention Newsletter and Bulletin Board for times and locations.

Please note that open parties may not serve alcoholic beverages; they will be asked to close if they do. Also remember that the legal drinking age in New York State is 21. The Hotel will be enforcing this law. All parties **MUST** be held in designated party areas only. Parties in other areas will be closed down.

Staff

Lunacon is run entirely by volunteers. We depend on people like you to help make the convention a success and we can use assistance everywhere.

We particularly need help Thursday afternoon/night for convention move-in and Art Show setup, and Sunday night for Art Show teardown and convention move-out. Extra time credit will be given to anyone who helps out on Thursday or Sunday evenings.

Those who assist a sufficient number of hours will receive a special t-shirt with artwork by Bob Eggleton (available only to these qualified Staff); those who serve above and beyond the call of duty get their memberships refunded and our deep and heartfelt thanks.

And **Lunacon's** Staff Den strives to provide all our volunteers with a place to which they know they can go for some relaxation and the occasional meal of good, substantial, nutritious food throughout the convention.

If you want to help, check the box on your registration form or sign up at the Staff table at the convention. Please.

Convention Office

The **Lunacon** Office is the operational center of the convention. This is where you may contact Committee Members, purchase Child Care tickets, or retrieve lost items. It is also the best place to leave items of interest for inclusion in our popular Newsletter.

Member Services

Attendees who need information or help at the convention will find it at the Member Services table. Located in the Westchester Ballroom Assembly area, it's the place to post messages on our Message Board, leave copy for the **Lunacon** newsletter, check Metro-North train schedules, coordinate services for the handicapped, or find out just what you want to know about the convention. If you have questions, comments, or problems while at the con, stop by Member Services. If they can't help you, they can direct you to someone who can.

Internet Room

We will be setting up multiple terminals connected through one of the local access providers to put you on-line to browse the World Wide Web. If the Internet is new to you, this is your chance to learn about it. If you're already familiar with it, you can hang out, play with network features, and discover more neat new things.

Newsletter

The Convention Newsletter will have the latest program changes, a listing of open parties, and other information of note. Copies will be available at various spots throughout the convention.

Convention Sales

Convention Sales is the place to purchase the official **Lunacon '99** t-shirt or Book Exhibit raffle tickets. Also available are *Lunarians* tote bags and a limited selection of t-shirts and program books from past **Lunacons**.

Other Fan Groups

As a service to the fannish community, **Lunacon** makes tables available to bids and other conventions and clubs for promotional purposes only (NOT for sales). Stop by sometime during the convention; the people there will be glad to chat with you. If your group would like to set up a table at **Lunacon**, please

drop us a note at the PO Box, or send us e-mail.

Registration

Lunacon '99 memberships are available at the following rates:

Adult:

\$36 through February 12, 1999
\$45 at the door

Children, aged 6-12:

\$18 through February 12, 1999
\$22.50 at the door

Children, under age 6:

Free (accompanied by a registered adult)

All children must be accompanied by a responsible adult. A limited amount of baby-sitting will be available; please see the section on Child Care for information. Children over 12 and under 18 must provide a parental release form waiving any liability of **Lunacon '99** if they are attending unaccompanied.

Please fill out the enclosed Registration Form, and mail it with a check, money order, or completed credit card information (including the cardholder's signature) to the convention address, Attn.: Registration. All checks and money orders must be drawn on a US bank and payable in US dollars to **Lunacon '99**. Do not send cash through the mail.

A receipt will be mailed to you. Please bring your receipt or identification to **Lunacon** to help expedite the process. For your convenience, we also accept MasterCard and Visa.

Refunds will not be given, but a membership may be transferred upon receipt of a written request from the current holder of the membership.

Registration will be open during the following hours:

Friday 3 pm to 10 pm
Saturday 9 am to 6 pm
Sunday 9:30 am until we're too tired

Signs posted in the hotel lobby will direct you to **Lunacon** Registration.

If any mailing information in this

progress report is inaccurate, please let us know as soon as possible. If you move during the coming year, please send us your new address so that you may continue to receive information on upcoming **Lunacons**.

Program Book Ads

The **Lunacon '99** Program Book will be 8 1/2" x 11", featuring a color cover by Bob Eggleton, photos and articles about our Guests of Honor, and other items of interest. If you wish to place an advertisement in this year's Program Book, write to the Convention PO Box or e-mail us for a rate card.

Hotel Information

Lunacon '99 will take place at the Rye Town Hilton, 699 Westchester Ave., Rye Brook, NY, in Westchester County, just north of New York City. The Rye stop on Metro-North's New Haven line is the closest train station. The hotel offers two restaurants on-site, an indoor pool, a health club, plenty of parking and, so we have heard, rooms.

Special room rates (per night) for **Lunacon '99** are: \$102 for a Single, \$108 for a Double (one or two beds, subject to availability) or Twin (two double beds), \$120 for a Triple or Quad (two double beds); these rates do not include local taxes.

The hotel accepts American Express, Visa, MasterCard, Carte Blanche, Diners Club, and Discover cards. When registering, you may request smoking or non-smoking floors and party, near-party or away-from-party areas. (Again, please remember, all parties must be held in designated party areas only. Parties elsewhere will be closed down.) You may register using the form we've provided or by dialing the hotel directly at 1-914/939-6300 (avoid using the Hilton 800 number); and be sure to mention **Lunacon '99**.

There are also a limited number of suites available. If you are interested in one, please write or e-mail **Lunacon**—not the hotel—as soon as possible.

Under New York State law, no one under the age of 18 may be allowed to rent a room. An exception may be made if the minor's parent, guardian or another responsible adult accepts responsibility for all costs associated with the room in a signed and dated letter that includes a photocopy of both sides of a major credit card.

There are a number of places to eat in the area and several supermarkets and other stores to supply all your needs.

Directions to Lunacon '99

BY CAR

From the South

Take I-95 (New Jersey Turnpike/New England Thruway) north to Exit 21, Rye. Go west on I-287 (Cross Westchester Expressway) to Exit 10 (Bowman Avenue/Webb Avenue). Make a right at the second traffic light, then go three more traffic lights and turn left into the hotel entrance;

or take I-87 (New York Thruway), or the Hutchinson River Parkway, or the Saw Mill Parkway north to I-287 east (Cross Westchester Expressway) to Exit 10 (Routes 120, 120A, Port Chester). Stay to the left, following the signs to Port Chester. Go under the highway and you are on Westchester Avenue. At the fourth traffic light, turn left into the hotel entrance.

From the North

Take I-95 (New England Thruway) south to Exit 21 (Rye, Cross Westchester Expressway). Go west on I-287 (Cross Westchester Expressway) to Exit 10 (Bowman Avenue/Webb Avenue). Make a right at the second traffic light, then go three more traffic lights and turn left into the hotel entrance;

or take I-87 (New York Thruway), or the Merritt Parkway, or the Saw Mill River Parkway, or I-684, or I-84 south to I-287 east (Cross Westchester Expressway) to Exit 10 (Routes 120, 120A, Port Chester). Stay to the left, following the signs to Port Chester. Go under the highway and you are on Westchester Avenue. At the fourth

traffic light, turn left into the hotel entrance.

From the North, and West of the Hudson River

All major highways intersect with I-87 (New York Thruway). Go east on I-87/I-287 over the Tappan Zee Bridge and stay on I-287 east (Cross Westchester Expressway) and continue as above under "From the South."

BY RAIL

Take the Metro-North New Haven Line local to the Rye Station. The hotel will run a complimentary shuttle bus to and from Rye, coordinated with the train schedule. A taxi from the train station to the hotel is currently about \$10.

BY BUS

Buses are available from various points in Westchester and the Bronx. For current fares and schedules, call the Westchester Department of Transportation at 1-914/682-2020.

Keeping In Touch

BY MAIL

Lunacon '99

Post Office Box 3566
New York, NY 10008-3566

BY E-MAIL

lunacon@lunacon.org

VISIT OUR WEBSITE

<http://www.lunacon.org>



Credits

Progress Report Editor: Paul Birnbaum
Design and Layout: Paul Birnbaum
Cover and Interior Art: Bob Eggleton
Li'l Luny: Wally Wood

"AD&D" and "Magic: the Gathering" are registered trademarks of Wizards of the Coast, Inc.

"Star Wars" is a registered trademark of Lucasfilm, Ltd.

"Hugo Award" and "Worldcon" are registered service marks of the World Science Fiction Society, an unincorporated literary society.

The **Lunacon '99** Progress Report is published and copyright © 1999 by the New York Science Fiction Society—the Lunarians, Inc.

"**Lunacon**" is a service mark of the New York Science Fiction Society—the Lunarians, Inc., a 501(c)(3) non-profit, educational organization, for their annual New York Metropolitan Area science fiction convention.



Lunacon '99

March 5-7, 1999
Membership registration form

Mail to: **Lunacon '99**
Attn: Registration
PO Box 3566
New York, NY 10008-3566

Please print legibly

Name: _____

Address: _____

City: _____ State: _____ Zip Code: _____

Phone #: (____) _____ E-mail: _____

Badge Name: _____

If this: Your first **Lunacon?** (*Welcome!*)

A new address since your last **Lunacon?**

Enclosed is \$ _____ for _____ adult memberships at \$36 each.

Enclosed is \$ _____ for _____ memberships for children 6-12 at \$18 each.

I would also like to register _____ children under 6.

Payment method: Check Money Order MasterCard Visa

Cardholder signature: _____

Card Number: _____ Exp date: _____

If you are registering more than one person at the same address, please list all of the additional names below. If the additional memberships are for people at different addresses, please list their names and addresses on a separate sheet of paper and enclose it with this registration form.

Additional memberships: _____

Notes: All checks and money orders must be drawn on a US bank and payable in US dollars to **Lunacon '99**. Or complete the above credit card information and sign this form on the specified line. Please mail this form no later than February 12, 1999.

All children, regardless of age, must be registered with the Convention and must be accompanied by an adult. Please include the ages, as of March 5, 1999, of all children.

I want to contribute to the success of **Lunacon '99!** I'm volunteering to help in the following areas: _____

Send me more information about the New York Science Fiction Society -the Lunarians, Inc.

New York Science Fiction Society—the Lunarians, Inc.

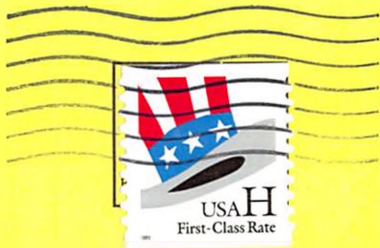
Lunacon '99

Post Office Box 3566
New York, NY 10008-3566

ADDRESS SERVICE REQUESTED



02142-0019



George Flynn
P.O.Box 1069
Kendall Square Station
Cambridge MA 02142-0008

